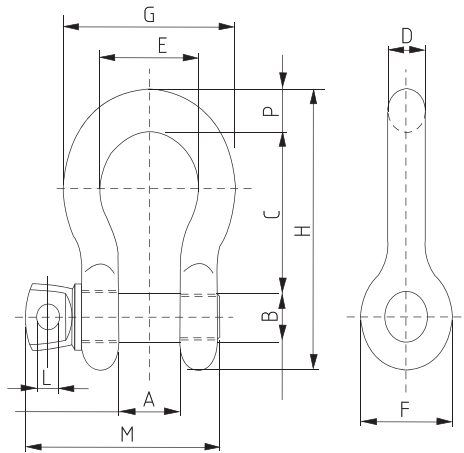


High-load Shackles

5100 - Screw Pin Bow Shackle



Description:

- Designed for frequent, non permanent applications
- Suitable for overhead lifting
- CE, Traceability code, Grade, Size, WLL & GRIPTON or GPT embossed

Standard:

US federal specification RR-C-271 D

Material:

Body: Forged Carbon Steel, Pin: Alloy Steel

Factor of safety:

6 to 1

Construction:

Quenched & tempered

Proof load:

Individually proof tested to 2 times of working load limit

Finish:

Body: Hot dip galvanised, Pin: Powder coated

Screw Pin Bow Shackle

Part No.	Size (in)	WLL (T)	A (in)	B (in)	C (in)	D (in)	F (in)	G (in)	H (in)	E (in)	M (in)	P (in)	Weight (lbs)
5100.0005	1/4"	0.5	0.51	0.31	1.14	0.27	0.79	0.69	1.30	1.90	0.16	1.50	0.1
5100.0007	5/16"	0.75	0.53	0.37	1.22	0.31	0.85	0.83	1.48	2.14	0.20	1.67	0.19
5100.0010	3/8"	1.00	0.67	0.44	1.44	0.39	1.03	0.98	1.81	2.54	0.22	2.11	0.31
5100.0015	7/16"	1.50	0.73	0.50	1.69	0.44	1.16	1.06	2.03	2.90	0.24	2.32	0.38
5100.0020	1/2"	2.00	0.81	0.62	1.88	0.50	1.31	1.22	2.32	3.31	0.30	2.76	0.72
5100.0032	5/8"	3.25	1.06	0.75	2.36	0.63	1.69	1.57	2.95	4.15	0.35	3.44	1.37
5100.0047	3/4"	4.75	1.26	0.87	2.81	0.75	2.01	1.89	3.50	4.94	0.39	3.98	2.35
5100.0065	7/8"	6.50	1.46	0.98	3.33	0.87	2.28	2.13	4.02	5.75	0.41	4.57	3.62
5100.0085	1"	8.50	1.71	1.10	3.79	1.04	2.70	2.36	4.67	6.51	0.47	5.33	5.03
5100.0095	1-1/8"	9.50	1.89	1.26	4.29	1.14	2.95	2.68	5.24	7.40	0.59	5.71	7.41
5100.0120	1-1/4"	12.00	2.09	1.38	4.74	1.26	3.31	2.99	5.83	8.19	0.65	6.30	9.5
5100.0135	1-3/8"	13.50	2.32	1.50	5.28	1.38	3.70	3.31	6.46	9.06	0.75	7.01	13.53
5100.0170	1-1/2"	17	2.44	1.65	5.85	1.50	3.90	3.62	6.89	9.98	0.83	7.64	17.2
5100.0250	1-3/4"	25	2.95	1.97	7.01	1.77	5.04	4.17	8.62	11.87	0.91	8.98	27.78
5100.0350	2"	35	3.31	2.20	7.76	2.05	5.83	4.80	9.92	13.31	0.98	10.04	45
5100.0550	2-1/2"	55	4.21	2.76	10.61	2.60	7.32	5.71	12.52	17.44	1.30	12.48	85.75