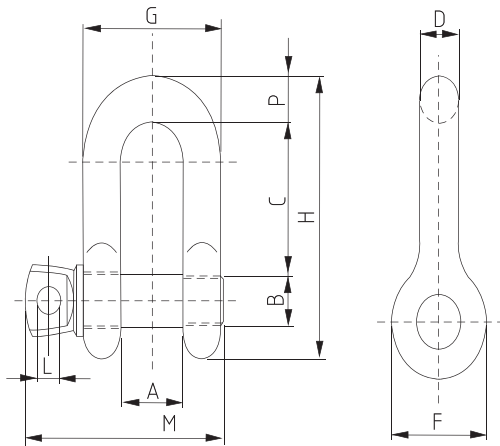


## High-load Shackles

### 5300 - Screw Pin D Shackle



#### Description:

- Designed for frequent, non permanent applications
- Suitable for overhead lifting
- CE, Traceability code, Grade, Size, WLL & GRIPTON or GPT embossed

Standard:	US federal specification RR-C-271 D
Material:	Body: Forged carbon steel, Pin: Alloy steel
Factor of safety:	6 to 1
Construction:	Quenched & tempered
Proof load:	Individually proof tested to 2 times of working load limit
Finish:	Body: Hot dip galvanized, Pin: Powder coated

#### Screw Pin D Shackle

Part No.	Size (in)	WLL (T)	A (in)	B (in)	C (in)	D (in)	F (in)	G (in)	H (in)	L (in)	M (in)	P (in)	Weight (lbs)
5300.0005	1/4"	0.5	0.51	0.31	0.87	0.27	0.69	1.02	1.62	0.16	1.50	0.26	0.11
5300.0007	5/16"	0.75	0.53	0.37	1.00	0.31	0.83	1.16	1.92	0.20	1.67	0.31	0.17
5300.0010	3/8"	1.00	0.67	0.44	1.22	0.39	0.98	1.46	2.32	0.22	2.11	0.39	0.28
5300.0015	7/16"	1.50	0.73	0.50	1.43	0.43	1.06	1.59	2.65	0.24	2.32	0.43	0.43
5300.0020	1/2"	2.00	0.81	0.62	1.63	0.50	1.22	1.81	3.03	0.30	2.76	0.50	0.59
5300.0032	5/8"	3.25	1.06	0.75	2.01	0.63	1.57	2.32	3.80	0.35	3.44	0.63	1.25
5300.0047	3/4"	4.75	1.26	0.87	2.48	0.75	1.89	2.83	4.65	0.39	3.98	0.79	2.63
5300.0065	7/8"	6.50	1.46	0.98	2.83	0.87	2.13	3.23	5.28	0.41	4.57	0.89	3.16
5300.0085	1"	8.50	1.71	1.10	3.22	0.98	2.36	3.68	5.94	0.47	5.33	0.98	4.75
5300.0095	1-1/8"	9.50	1.89	1.26	3.70	1.14	2.68	4.17	6.81	0.59	5.71	1.14	6.75
5300.0120	1-1/4"	12.00	2.09	1.38	4.02	1.26	2.99	4.61	7.46	0.65	6.30	1.26	9.06
5300.0135	1-3/8"	13.50	2.32	1.50	4.47	1.38	3.31	5.08	8.25	0.75	7.01	1.38	11.63
5300.0170	1-1/2"	17	2.44	1.61	4.84	1.50	3.62	5.43	8.98	0.83	7.64	1.50	15.95
5300.0250	1-3/4"	25	2.95	1.97	5.83	1.77	4.17	6.50	10.67	0.91	8.98	1.77	26.75
5300.0350	2"	35	3.31	2.20	6.85	2.05	4.80	7.32	12.36	0.98	10.04	2.01	42.31
5300.0550	2-1/2"	55	4.21	2.76	8.09	2.64	5.71	9.49	14.96	1.30	12.48	2.64	71.75