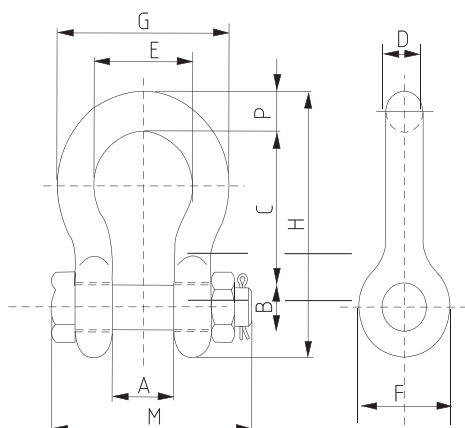


## High-load Shackles

### 5150 - Nut & Bolt Bow Shackle



#### Description:

- Recommended for long term and permanent applications
- Enhanced safety with nut and cotter pin
- Suitable for overhead lifting
- CE, Traceability code, Grade, Size, WLL & GRIPTON or GPT embossed

|                   |  |
|-------------------|--|
| Standard:         | US federal specification RR-C-271 D                        |
| Material:         | Body: Forged carbon steel, Pin: Alloy steel                |
| Factor of safety: | 6 to 1   |
| Construction:     | Quenched & tempered  |
| Proof load:       | Individually proof tested to 2 times of working load limit |
| Finish:           | Body: Hot dip galvanised, Pin: Powder coated               |

| Nut & Bolt Bow Shackle |           |         |        |        |        |        |        |        |        |        |        |        |              |
|------------------------|-----------|---------|--------|--------|--------|--------|--------|--------|--------|--------|--------|--------|--------------|
| Part No.               | Size (in) | WLL (T) | A (in) | B (in) | C (in) | D (in) | F (in) | G (in) | H (in) | E (in) | M (in) | P (in) | Weight (lbs) |
| 5150.0005              | 1/4"      | 0.5     | 0.51   | 0.31   | 1.14   | 0.27   | 0.79   | 0.69   | 1.30   | 1.90   | 1.67   | 0.27   | 0.11         |
| 5150.0007              | 5/16"     | 0.75    | 0.53   | 0.37   | 1.22   | 0.31   | 0.85   | 0.83   | 1.48   | 2.14   | 1.89   | 0.31   | 0.22         |
| 5150.0010              | 3/8"      | 1.00    | 0.67   | 0.44   | 1.44   | 0.39   | 1.03   | 0.98   | 1.81   | 2.54   | 2.26   | 0.39   | 0.33         |
| 5150.0015              | 7/16"     | 1.50    | 0.73   | 0.50   | 1.69   | 0.44   | 1.16   | 1.06   | 2.03   | 2.90   | 2.54   | 0.43   | 0.49         |
| 5150.0020              | 1/2"      | 2.00    | 0.81   | 0.62   | 1.88   | 0.50   | 1.31   | 1.22   | 2.32   | 3.31   | 2.93   | 0.50   | 0.79         |
| 5150.0032              | 5/8"      | 3.25    | 1.06   | 0.75   | 2.36   | 0.63   | 1.69   | 1.57   | 2.95   | 4.15   | 3.66   | 0.63   | 1.68         |
| 5150.0047              | 3/4"      | 4.75    | 1.26   | 0.87   | 2.81   | 0.75   | 2.01   | 1.89   | 3.50   | 4.94   | 4.21   | 0.75   | 2.72         |
| 5150.0065              | 7/8"      | 6.50    | 1.46   | 0.98   | 3.33   | 0.87   | 2.28   | 2.13   | 4.02   | 5.75   | 4.76   | 0.87   | 3.95         |
| 5150.0085              | 1"        | 8.50    | 1.71   | 1.10   | 3.79   | 1.04   | 2.70   | 2.36   | 4.67   | 6.51   | 5.39   | 0.98   | 5.66         |
| 5150.0095              | 1-1/8"    | 9.50    | 1.89   | 1.26   | 4.29   | 1.14   | 2.95   | 2.68   | 5.24   | 7.40   | 5.71   | 1.14   | 8.27         |
| 5150.0120              | 1-1/4"    | 12.00   | 2.09   | 1.38   | 4.74   | 1.26   | 3.31   | 2.99   | 5.83   | 8.19   | 6.57   | 1.26   | 11.71        |
| 5150.0135              | 1-3/8"    | 13.50   | 2.32   | 1.50   | 5.28   | 1.38   | 3.70   | 3.31   | 6.46   | 9.06   | 7.28   | 1.38   | 15.83        |
| 5150.0170              | 1-1/2"    | 17      | 2.44   | 1.65   | 5.85   | 1.50   | 3.90   | 3.62   | 6.89   | 9.98   | 7.80   | 1.50   | 20.8         |
| 5150.0250              | 1-3/4"    | 25      | 2.95   | 1.97   | 7.01   | 1.77   | 5.04   | 4.17   | 8.62   | 11.87  | 8.94   | 1.77   | 33.91        |
| 5150.0350              | 2"        | 35      | 3.31   | 2.20   | 7.76   | 2.05   | 5.83   | 4.80   | 9.92   | 13.31  | 9.84   | 2.05   | 52.25        |
| 5150.0550              | 2-1/2"    | 55      | 4.21   | 2.76   | 10.61  | 2.60   | 7.32   | 5.71   | 12.52  | 17.44  | 11.77  | 2.64   | 98.25        |
| 5150.0850              | 3"        | 85      | 5      | 3.3    | 13     | 3.12   | 7.88   | 6.5    | 14.62  | 21.5   | 15.55  | 3.62   | 154.0        |
| 5150.1200              | 3-1/2"    | 120     | 5.25   | 3.76   | 15.63  | 3.62   | 9      | 8      | 17.02  | 24.88  | 18.2   | 4.38   | 265.0        |
| 5150.1500              | 4"        | 150     | 5.5    | 4.26   | 14.5   | 4      | 10     | 9      | 18     | 25.68  | 19.84  | 4.56   | 338.0        |