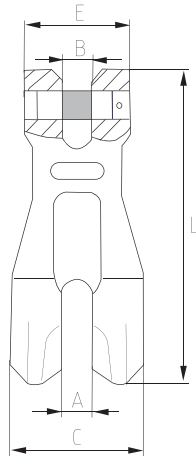


Chain Slings and Fittings

8090 - Shortening Clutch



Description:

- Designed for use with grade 80 alloy steel chain
- Used for shortening or holding required length of chain
- Size, CE, WLL, Traceability code & GRIPTON or GPT embossed

Standard:	EN 1677
Material:	Alloy steel
Factor of safety:	4 to 1
Construction:	Quenched & tempered
Proof load:	2 times of working load limit
Finish:	Powder coated

Shortening Clutch

Part No.	WLL (T)	A (mm)	B (mm)	C (mm)	E (mm)	L (mm)	Weight (Kg)
8090.0078	2	9.5	9.5	45	36	101	0.41
8090.0010	3.15	13	13	55	48	138	0.97
8090.0013	5.3	18	16	75	59	177	2.01
8090.0016	8	21	21	93	73	220	3.32
8090.0020	12.5	22	22	99	78	238	6.20
8090.0022	15	25.5	25.5	118	98	295	8.50