

## **Feature for Feature — Dillon Dynamometer sets the standard.**

Accuracy:  $\pm 0.5\%$  of full scale capacity for precise data.

Broadest range of capacities and resolutions are certain to fit your needs.

Wide temperature range for use in nearly any environment (-50° F to 140° F / -14° C to 60° C)

Large safety factor for overload protection and long life.

No batteries required.

Dial size choice for the best in portability or visibility.

Anti-parallax dial and pointer produce accurate readings from any perspective.

Maximum hand retains peak load point and is easily reset.

Zero control cancels preset loads (backside).

High strength case resists heavy blows.

Generous shackle openings mate with most hooks and hardware.

High specification materials on all load components. Heat treated to tight tolerances.

Durable powder coat paint provides outstanding protection.

Offset load beam eases tension measurement.



5" (125 mm) diameter AP dynamometer includes a rugged ABS plastic carry case with die-cut foam inserts. Capacities of 30,000 lb (15,000 kg) and above are shipped in a heavy-duty reinforced plywood crate. An optional steel carry case is available for 10" (250 mm) diameter dynamometers up to 20,000 lb (10,000 kg) capacity.

## Options



### Zero Positioning

The standard zero position is 9 o'clock for both the 5" and 10" dial sizes. Capacities up to 20,000 lb can be supplied with the zero at 12, 3 or 6. Photo shows a nonstandard position of 12 o'clock.



### Klaxon Signal Alarm

Mounted on rear of the Dynamometer and sounds an alarm at a preset load point.

## Model AP Mechanical Dynamometer Capacities and Increments

### POUND CAPACITIES

5" (125 mm) Dial Size		10" (250 mm) Dial Size	
Part Number	Capacity x Division Size	Part Number	Capacity x Division Size
30006-0019	500 x 5		
30006-0027	1,000 x 10	30007-0026	1,000 x 5
30006-0035	2,000 x 20	30007-0034	2,000 x 10
30006-0043	4,000 x 25		4,000 x 20
30006-0050	5,000 x 50	30007-0059	5,000 x 20
30006-0076	8,000 x 50	30007-0075	8,000 x 50
30006-0084	10,000 x 100	30007-0083	10,000 x 50
30006-0092	15,000 x 100	30007-0091	15,000 x 100
30006-0100	20,000 x 200	30007-0109	20,000 x 100
		30784-0017	30,000 x 200
		30784-0033	50,000 x 200

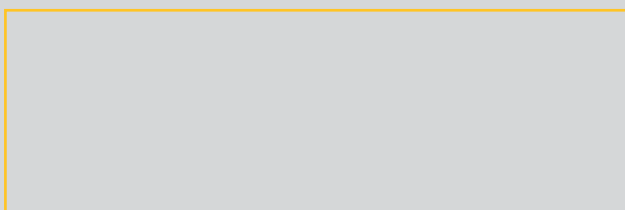
### KILOGRAM CAPACITIES

125 mm (5") Dial Size		250 mm (10") Dial Size	
Part Number	Capacity x Division Size	Part Number	Capacity x Division Size
30006-0134	500 x 5	30007-0133	500 x 2
30006-0159	1000 x 10	30007-0158	1000 x 5
30006-0126	2000 x 20	30007-0125	2000 x 10
30006-0167	4000 x 25		
		30007-0174	5000 x 20
30006-0118	10000 x 100	30007-0117	10000 x 50
		30784-0058	20000 x 100

**Warranty:** 2 years parts and labor



Dillon also manufactures electronic dynamometers and quick-attach tension meters.



## DILLON

Force Measurement Equipment  
A division of Avery Weigh-Tronix, LLC

Foundry Lane, Smethwick,  
West Midlands B66 2LP

Tel: +44 (0) 845 246 6717 Fax: +44 (0) 845 246 6718

E-mail: [sales@dillon-force.co.uk](mailto:sales@dillon-force.co.uk)

[www.dillon-force.co.uk](http://www.dillon-force.co.uk)

# AP Dynamometer Specifications

**DILLON**



## Pound Capacities

5" (125 mm) Dial Size		10" (250 mm) Dial Size		Ultimate Safety Factor	
Part Number	Cap x Division Size	Part Number	Cap x Division Size		
LOW	30006-0019	500 x 5	N/A	5:1	
	30006-0027	1,000 x 10	30007-0026	1,000 x 5	5:1
	30006-0035	2,000 x 20	30007-0034	2,000 x 10	5:1
	30006-0043	4,000 x 25	N/A		5:1
	30006-0050	5,000 x 50	30007-0059	5,000 x 20	5:1
	30006-0076	8,000 x 50	30007-0075	8,000 x 50	5:1
	30006-0084	10,000 x 100	30007-0083	10,000 x 50	5:1
	MED	30006-0092	15,000 x 100	30007-0091	15,000 x 100
30006-0100		20,000 x 200	30007-0109	20,000 x 100	4.5:1
HIGH	N/A	30784-0017	30,000 x 200	5:1	
	N/A	30784-0033	50,000 x 200	3:1	

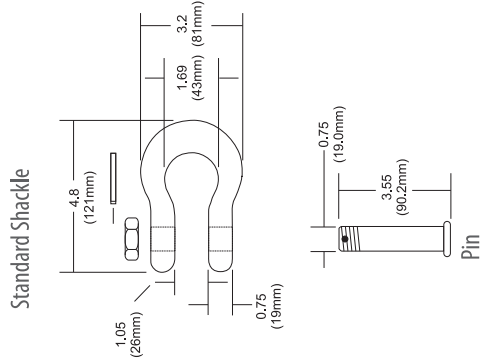
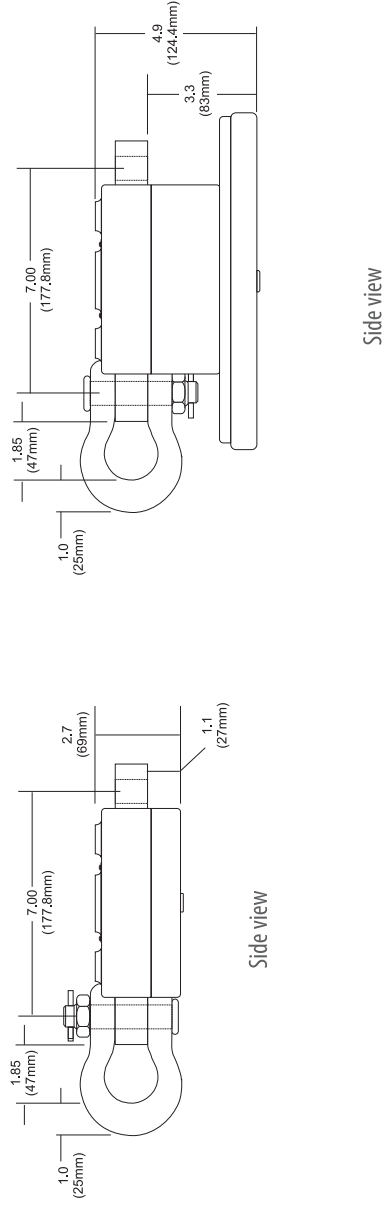
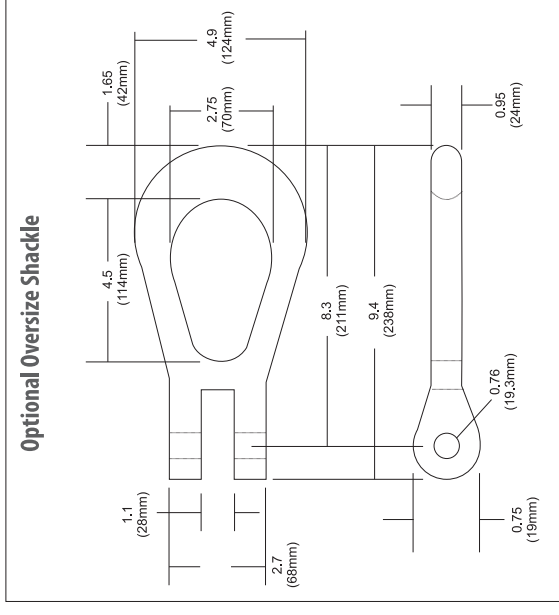
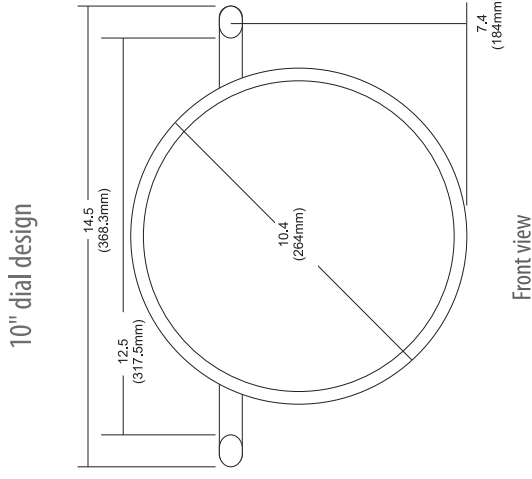
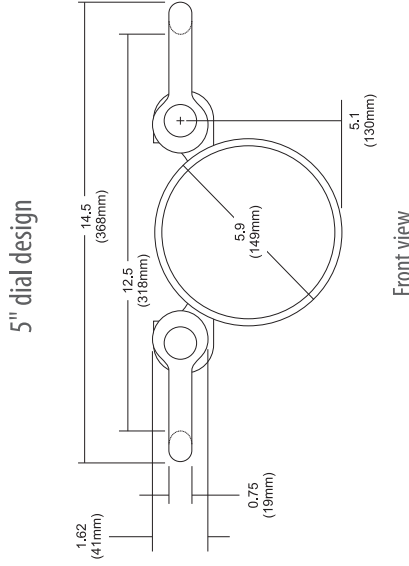
## Kilogram Capacities

5" (125 mm) Dial Size		10" (250 mm) Dial Size		Ultimate Safety Factor	
Part Number	Cap x Division Size	Part Number	Cap x Division Size		
LOW	30006-0134	500 x 5	30007-0133	500 x 2	5:1
	30006-0159	1000 x 10	30007-0158	1000 x 5	5:1
	30006-0126	2000 x 20	30007-0125	2000 x 10	5:1
	30006-0167	4000 x 25	N/A		5:1
	N/A		30007-0174	5000 x 20	5:1
MED	30006-0118	10000 x 100	30007-0117	10000 x 50	4.5:1
HIGH	N/A	30784-0058	20000 x 100	4:1	

# Model AP Dynamometer Dimensions

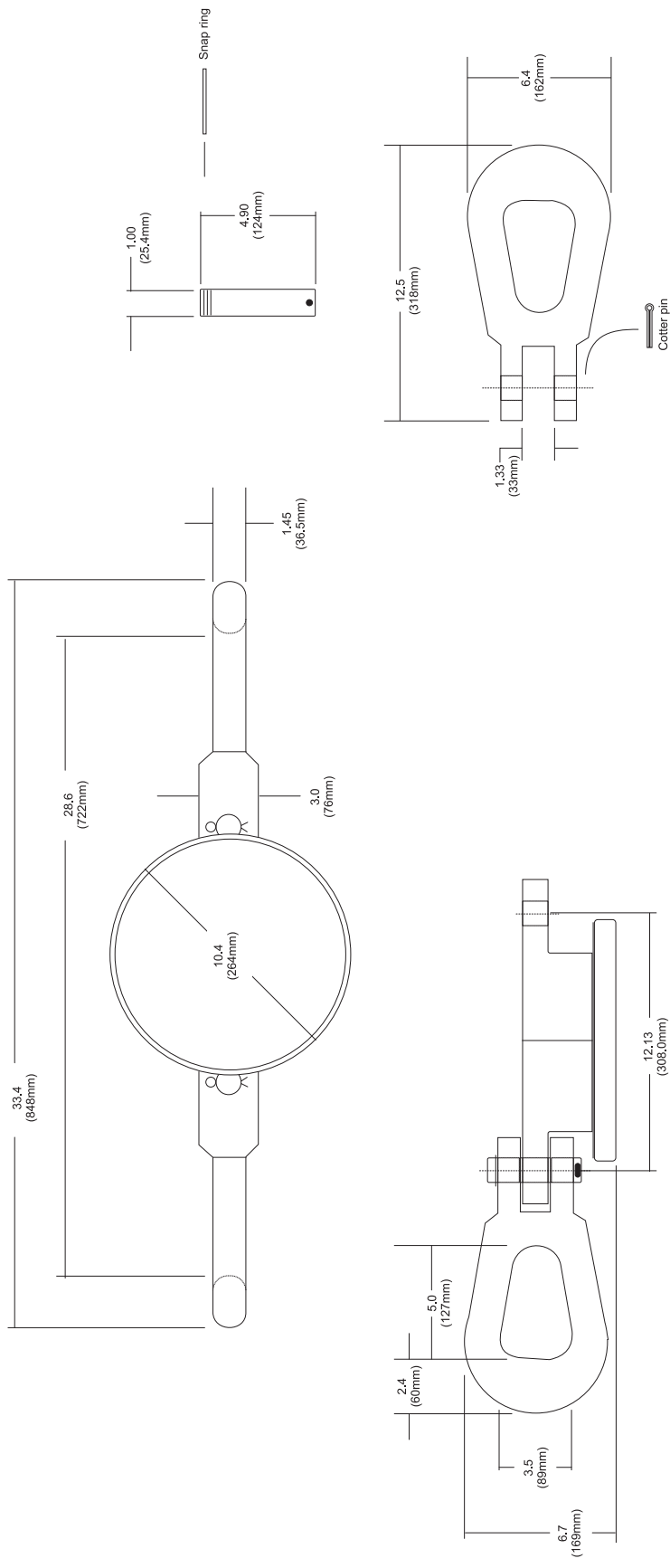
Dimensions in inches (mm)  
 Drawing scales differ between capacities  
 Dimensions subject to manufacturer / supplier tolerances and  
 are subject to change without notice.

## Low & Medium Capacities 500-20,000 lb / 200-10,000 kg



**High Capacities**  
**30,000–50,000 lb / 15,000–20,000 kg**

For smaller, lighter and/or anchor shackles see Dillon APxtreme.



# Model AP Mechanical Dynamometer

**Accuracy:**  $\pm 0.5\%$  of capacity

**Temperature Range:** -50° to 140° F (-45° to 60° C)

**Ultimate Safety Factor:**

See table on cover for minimum USF

**Construction:**

*Pressure bar—*

High-grade E4340 alloy steel or 7075-T651 aluminum

*Shackles –*

A4140 forged steel (machined from E4340 steel)

*Shackle pins –*

Machined from E4340 steel

**Case Housing:**

5" models are equipped with high strength composite plastic case.

10" models use cast aluminum enclosure.

**Corrosion Protection:** Pressure bar protected with durable powder coat paint. Shackles and pins are electroless nickel plated. All integral machining and fasteners are produced from noncorrosive materials or have suitable plating.

**Zero Control:** Zero up to 20% of capacity. Zeroed load must be considered as part of ultimate load.

**Calibration:** Traceable to NIST.

**Documentation:** Includes User's Guide and signed calibration card.

**Carry Case/Crate:**

Low/Med capacity 5" dial – includes plastic carry case

Low/Med capacity 10" dial – optional steel carry case

All high capacity – includes reinforced plywood crate

**Periodic Proof Loads:** Controlled 150% proof loads permitted annually.

**Approval:** CE

**Warranty:** 2 years parts and labor

**Shipping and packing** (approximate weights):

**5" Low and Med Capacities**

Net weight	9 lb
Shipping weight	15 lb
Shipping box	16" x 11" x 7"

**10" Low and Med Capacities**

Net weight	10 lb
Shipping weight	16 lb
Shipping weight (with optional steel case)	26 lb
Shipping box	14" x 14" x 7"

**30,000 – 50,000 lb (20,000 kg) High Capacity**

Net weight	64 lb
Shipping weight	98 lb
Shipping crate	37.5" x 13" x 10.5"



## DILLON

Force Measurement Equipment  
A division of Avery Weigh-Tronix, LLC  
Foundry Lane, Smethwick,  
West Midlands B66 2LP

Tel: +44 (0) 845 246 6717 Fax: +44 (0) 845 246 6718  
E-mail: sales@dillon-force.co.uk  
www.dillon-force.co.uk

5/11 APDyna\_RoW\_spec\_500601.indd  
AWT35-500601A (web 6/12)